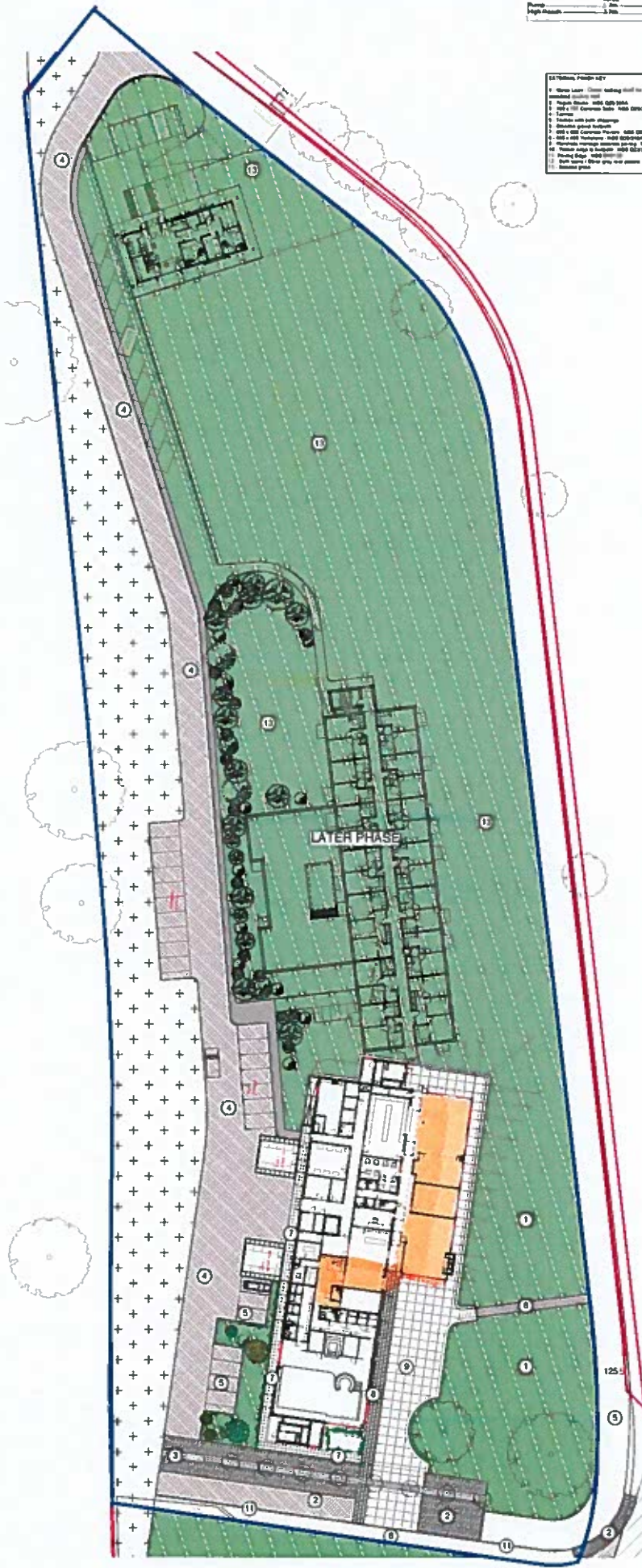


Typical fire and rescue service vehicle access route specification

Access Type	Minimum width of road between kerbs	Minimum width of pathways	Minimum turning space between kerbs	Minimum turning space between walls	Minimum clearance height	Minimum turning capacity provided
Drop	3.0m	3.0m	10.0m	10.0m	3.0m	12.0
High Road	3.0m	3.0m	10.0m	10.0m	3.0m	12.0

- EXISTING PAVING KEY**
- 1. Green Lawn - Clear walking area for good standard quality soil
 - 2. Asphalt Slabs - 100mm G20/25
 - 3. 100 x 100 Concrete Slabs - 100mm G20/25
 - 4. Concrete
 - 5. Concrete with joint strips
 - 6. Concrete ground surface
 - 7. 100 x 100 Concrete Pavers - 100mm G20/25
 - 8. 100 x 100 Concrete Pavers - 100mm G20/25
 - 9. Concrete Slabs - 100mm G20/25
 - 10. Concrete Slabs - 100mm G20/25
 - 11. Concrete Slabs - 100mm G20/25
 - 12. Concrete Slabs - 100mm G20/25



SAFETY, HEALTH & ENVIRONMENTAL INFORMATION

In addition to the Hazards/Risks normally associated with the types of work detailed on this drawing note the following:-

DESIGN/CONSTRUCTION

MAINTENANCE/CLEANING/OPERATION

DECOMMISSIONING/DEMOLITION

It is assumed that all works will be carried out by a competent contractor working, where appropriate, to an approved method statement.

- Rev D - Paving specification updated 10.06.14
- Rev C - Boundary added 10.06.14
- Rev B - Pool updated 09.06.14
- Rev A - Annotation updated 05.06.14

TENDER ISSUE

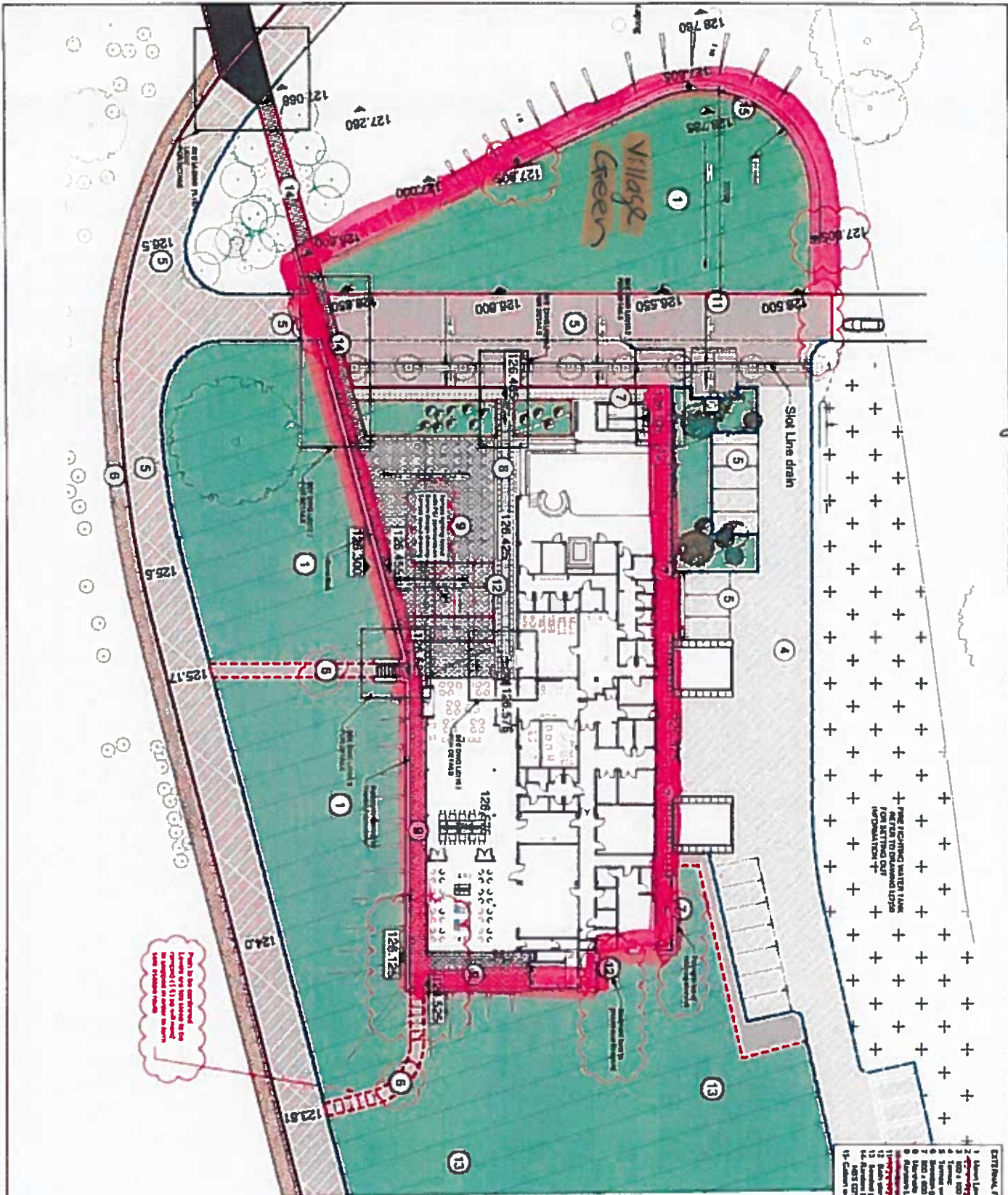
cms
Bath Limited
 51 - 53 High Street Tel: 01249 701333
 Corsham Wiltshire Fax: 01249 701444
 SN1 3 0EZ ma4@cmsbath.co.uk

14-1549-L(B)03 D

Copyright: Do not copy this drawing. Check all dimensions on site. This drawing is only to be used on the site for which designed.
 Client: Rangeford RAP Ltd
 Project: Royal Arthur Park CCRC
 Drawing: Site Plan
 Scale: 1:500 @ A2
 Date: August 2013
 Drawn: GT Checked



The Pavilion + Village Green



- EXTERNAL FINISH LIST**
1. Asphalt Lanes
 2. ~~100mm concrete~~ 100mm concrete
 3. ~~100mm concrete~~ 100mm concrete
 4. ~~100mm concrete~~ 100mm concrete
 5. ~~100mm concrete~~ 100mm concrete
 6. ~~100mm concrete~~ 100mm concrete
 7. ~~100mm concrete~~ 100mm concrete
 8. ~~100mm concrete~~ 100mm concrete
 9. ~~100mm concrete~~ 100mm concrete
 10. ~~100mm concrete~~ 100mm concrete
 11. ~~100mm concrete~~ 100mm concrete
 12. ~~100mm concrete~~ 100mm concrete
 13. ~~100mm concrete~~ 100mm concrete
 14. ~~100mm concrete~~ 100mm concrete
 15. ~~100mm concrete~~ 100mm concrete

MEMO LIST

- HB2 325 face
- HB2 upper kerb
- Flush BM 546
- 255 ditched channel
- 355 flush channel
- Formery edging type ET
- Timber edging to soft landscaping

Note: This drawing is to be read in conjunction with hydraulic drawing 3306-C-116-C2.

FOR COMMENT 17-07-15

Pave to be confirmed. Landscaping to be confirmed. (1) to be confirmed. (2) to be confirmed. (3) to be confirmed. (4) to be confirmed. (5) to be confirmed. (6) to be confirmed. (7) to be confirmed. (8) to be confirmed. (9) to be confirmed. (10) to be confirmed. (11) to be confirmed. (12) to be confirmed. (13) to be confirmed. (14) to be confirmed. (15) to be confirmed.

cms
 14 1549-L(0)19

4